

SEED TREATMENTS

VARIETY	BAG SIZE (kgs)	PONCHO® PLUS & ILEVO®	CRUISER® OPTI & SALTRO® DUO	PONCHO® PLUS & SALTRO® DUO	EQUENTO® EXTREME & SALTRO® DUO
Hybrid Triazine Tolerant					
HyTTec® Velocity	20	✓	–	–	–
HyTTec® Trident	20	✓	–	–	–
HyTTec® Trophy	20	–	–	–	✓
HyTTec® Trifecta	20	–	–	–	✓
Imidazolinone Tolerant					
Nuseed Ceres IMI	20	–	✓	–	–
Dual Herbicide Tolerant Canola - Triazine and Imidazolinone Tolerant					
Nuseed Griffon TTI	20	–	–	–	✓
TruFlex® hybrid canola with Roundup Ready® Technology					
Nuseed Emu TF	20	✓	–	–	–
Nuseed Hunter TF	20	–	–	–	✓
Nuseed Raptor TF	20	–	–	✓	–
Nuseed Eagle TF	20	–	–	–	✓
Open Pollinated Triazine Tolerant					
ATR Bluefin	20	–	✓	–	–
ATR Swordfish	20	–	✓	–	–
Hybrid Conventional					
Nuseed Diamond	20	–	✓	–	–
Nuseed Quartz	20	–	✓	–	–

SEED TREATMENTS

FUNGICIDES

- **Salstro® Duo** – A broad spectrum fungicidal seed treatment for the control of seedling blackleg and damping off diseases such as pythium and rhizoctonia in canola. Contains SALTRO: 200 g/L Pydiflumetofen, Maxim XL: 25 g/L Fludioxonil & 10 g/L Metalxyl-M.
- **ILEVO®** – A fungicidal seed treatment for suppression of blackleg. Contains 380 g/L FLUOPYRAM.

INSECTICIDES

- **Cruiser Opti®** – A broad spectrum insecticidal seed treatment for early plant protection against pests such as wireworm, aphids, red legged earth mite and lucerne flea. Contains 210 g/L Thiamethoxam and 37.5 g/L Lambda-Cyhalothrin.
- **EQUENTO® Extreme** – is an insecticidal seed treatment for the early season control of redlegged earthmites, blue oat mites, green peach and grey cabbage aphids. Protection from wireworms, bronze field beetle, vegetable weevil, spotted vegetable weevil, portuguese millipede and slaters. Contains EQUENTO®: 100 g/L Isocycloseram and CRUISER® 600FS: 600 g/L Thiamethoxam.
- **Poncho® Plus** – Insecticidal seed treatment for early protection of a broad number of insect pests in canola including wireworm, cutworm and lucerne flea plus red legged earth mite, blue oat mite and aphids. Contains 360 g/L Clothianidin and 240 g/L Imidacloprid.

TREATMENT AVAILABILITY

Seed treatment offerings are subject to availability and are subject to possible change.

MARKET DEVELOPMENT TEAM



Chris Roberts
National Market
Development
Manager
M 0437 178 296



Michael Hickey
Regional Market
Development Manager
– West

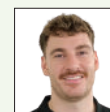
SALES TEAM



Andrew Suverijn
National Sales
Manager
M 0409 484 702



Hugh Trenorden
Regional Sales Manager
– West
M 0437 206 313



Callum Pestell
Area Sales Manager
Northern WA
M 0427 168 356



Andrew Royce
Area Sales Manager
Southern WA
M 0427 466 916



Pippa Reilly
Customer Sales
Representative
M 0436 856 840

General Enquiries and Customer Service:
1800 NUSEED (1800 687 333)
Nuseed Pty Ltd, 5 Ballinger Street
PO Box 377 Horsham Vic 3402



@NuseedAustralia
Follow our Twitter and
Facebook page to keep
up to date with Nuseed



**SUBSCRIBE
TO OUR
UPDATES**

© 2025 Nuseed Proprietary Ltd. All trade marks are owned by Nuseed Proprietary Ltd, used under license or are owned by third parties and used only to describe compatibility with those related products. TruFlex and Roundup Ready are registered trademarks of the Bayer Group. Cruiser is a registered trademark of Syngenta. ILeVO and Poncho Plus are registered trademarks of BASF. Salstro is a registered trademark of Syngenta Participations AG. **DISCLAIMER:** This document is for information purposes only. Nuseed and its agents or employees will not be liable for any loss or damage suffered by any person as a result of any reliance of this document. Always read the terms and conditions on, and ensure compliance with stewardship obligations, before opening a seed bag. Always follow the label directions on seed bags and plant protection products.