

N4HM354



SUNFLOWER

GREAT YIELDING EARLY HYBRID

The high yield potential for this medium-early hybrid and its fit from Canada to Texas make it stand out from the rest. Great oil content, resistance to multiple races of downy mildew and strong stalks are additional benefits that make N4HM354 a must have for your farm.

PRIMARY MARKET:

NuSun CRUSH

SECONDARY MARKET OPTIONS:

BIRD FOOD

HERBICIDE TRAIT:

Clearfield

DOWNY MILDEW RESISTANT:

Yes

MATURITY:

Medium-Early/Group 3

Key Features

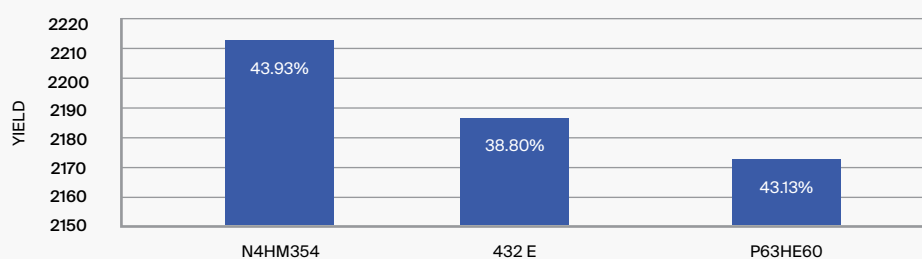
NuSun, Beyond herbicide tolerant

Consistent yield, oil profile

Great root and stalk strength

Widely adapted across multiple growing regions

N4HM354 SD DATE COMPARING SIMILAR MATURITY COMPETITOR HYBRIDS



2015-2019 NUFARM R&D AND SDSU TRIALS - 10 TRIAL SITES

MANAGEMENT RECOMMENDATIONS

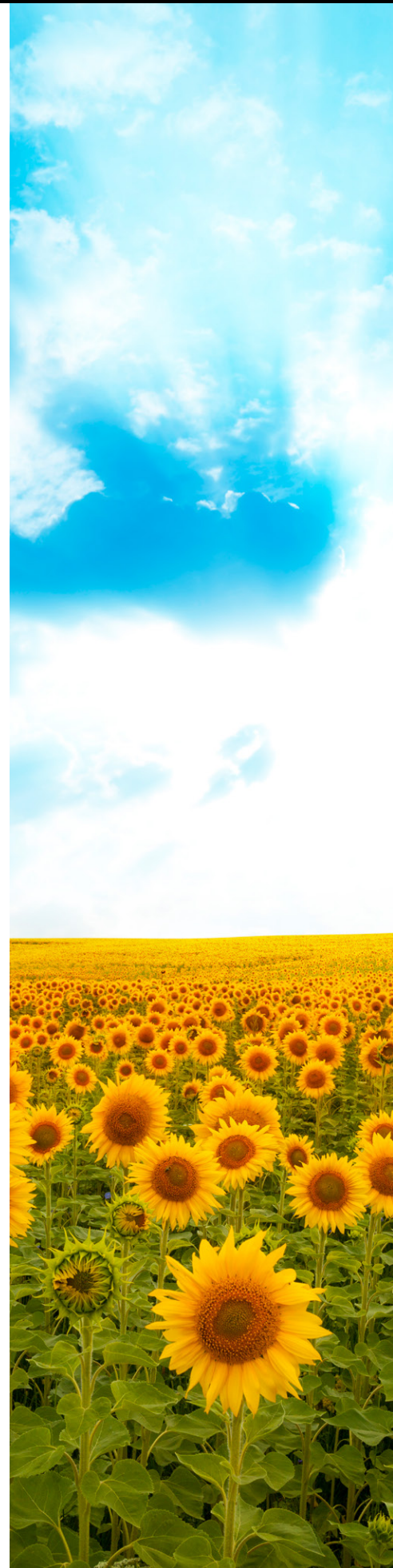
Recommended planting rate: 18,000-23,000 plants per acre

Can be planted up to the Canadian border

N4HM354's consistent high yield, test weight and outstanding plant health makes it a perfect fit for northern growers. Year in and year out, N4H354 is a reliable high yielder for your farm.

- JED WALL, NUFARM FIELD SALES TEAM MANAGER

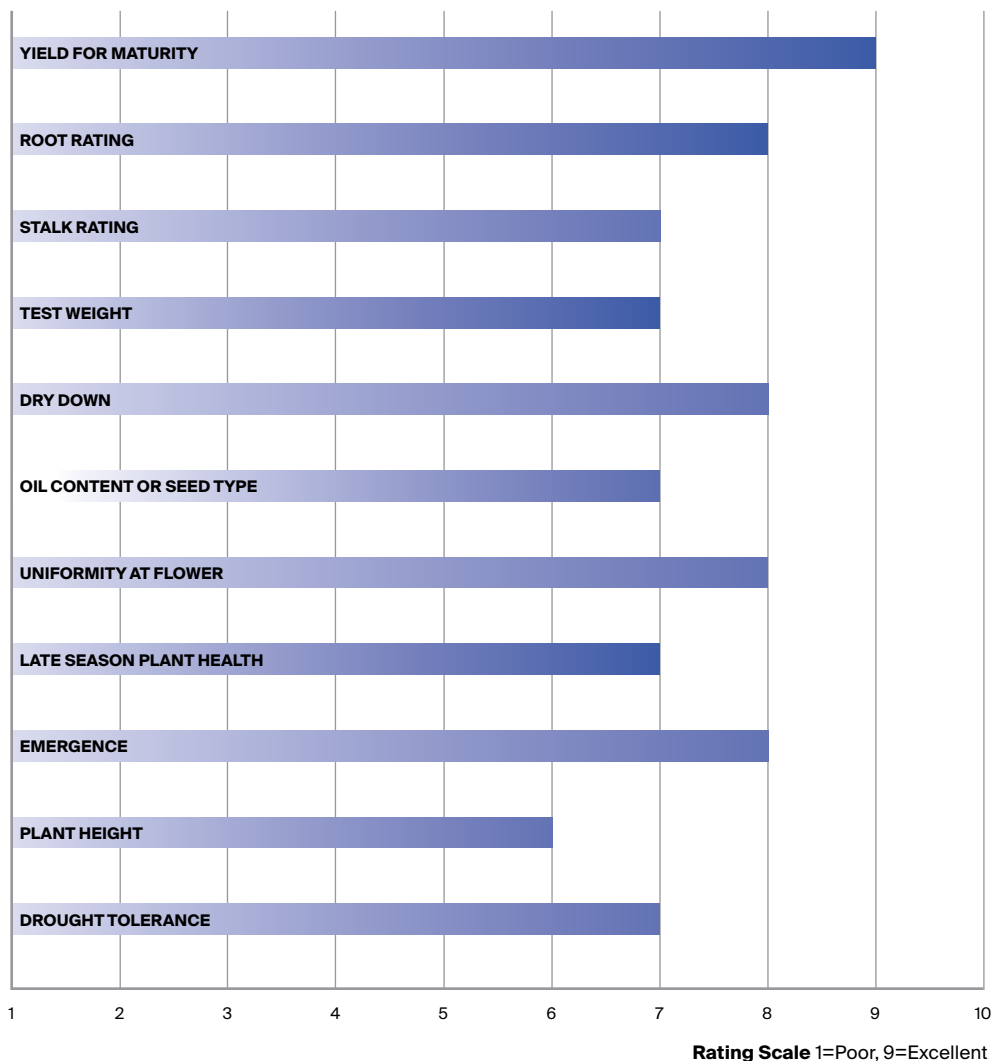
nufarm
Evolving Ag



Seed Treatment

Nufarm hybrids are treated with fungicide and insecticide seed treatment to protect your seed investment.

HYBRID CHARACTERISTICS



nufarm
Evolving Ag

888-786-SEED

